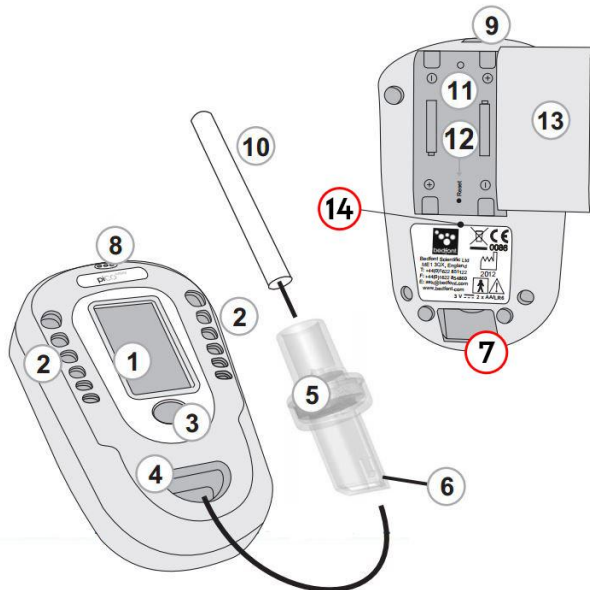


A. Contents



1. piCO⁺ Monitor
2. Zippered Monitor Case
3. Operating Manual
4. D-Piece
5. Mouthpiece
6. (2) AA Batteries
7. Infection Control Guide
8. COdata+ Tracking & Database Software CD & Manual
9. USB Cable
10. MaternityCO™ Pack
11. Carrying Case
12. Carrying Strap

B. Monitor Overview





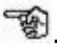
1. Display
2. Colored LEDs
3. Button – ON/OFF & Navigation
4. D-Piece Opening
5. D-Piece
6. Lug on D-Piece
7. Exhaust Port
8. Sounder
9. USB Connector
10. Mouthpiece
11. Battery Compartment
12. **Reset Button** ****NEW FEATURE****
 - a. Resets monitor to factory settings
 - i. Press with a paperclip while monitor on
 - ii. Calibrate as normal
13. Battery Cover
14. **Vent Hole – DO NOT COVER WITH LABELS.**
**** NEW FEATURE v2.7****
 - A. **Embedded software serial number - found on bottom of screen when turning on.**

Please Remember

1. **Never** use or store alcohol based products around your monitor or tester.
2. Change your D-piece every **30** days.
3. Calibrate every **6 months** to correct for sensor drift using **20 ppm** calibration gas. ****Your monitor is shipped to you already calibrated.****
4. **Never** block the air/vent hole on the piCO+ with labels.

C. Operating Instructions



1. Turn monitor ON by holding the button down for three seconds.
2. Insert the D-Piece into the monitor.
3. Place a mouthpiece into the D-Piece.
4. Start breath test | inhale and double click with the hand pointing to  . (User should hold their breath for 15 seconds)
5. After the beep, blow slowly into the mouthpiece, aiming to empty the lungs completely.
6. Monitor's display and LED lights will change colors and sounder will emit sound based on reading.
7. The carbon monoxide parts per million (ppm) and percentage carboxyhaemoglobin (%COHb) - CO in the blood, will be displayed on the screen.
8. Reading will appear on screen until you double click the return arrow  .
9. To repeat the breath test, follow the steps above.
10. To switch the monitor off, hold the button down for three seconds. The monitor will power off after five minutes of inactivity.

D. Typical Smoking Ranges



- **0 - 6 PPM | Non-Smoker Range**
- **7-19 PPM | Light Smoking Range**
 - Typically observed when smoking under a pack of cigarettes a day.
- **20+ PPM | Heavy Smoking Range**
 - Typically observed when smoking over a pack of cigarettes a day.

E. Infection Control



NEVER USE cleansing products containing *alcohol* or other cleaning agents or solvents around your monitor. Bedfont offers alcohol-free cleansing wipes which are specifically engineered for use on Bedfont monitors and accessories. Effective against 99.999% of Germs, Spores, Bacteria, and Fungi. Tested against H5N1 Avian Flu and H1N1 Swine Flu. Additionally, Bedfont offers a hand sanitizer which was designed to safely and gently cleanse your hands. Because it's engineered to be alcohol-free, it won't interfere with your monitor's sensor or accessories. Kills 99.99% of germs, bacteria, & fungi without drying your skin.



Bedfont is proud to have the world's first line of anti-bacterial CO monitors. Built into the surface of your piCO+ is a patented additive called SteriTouch®. This range of antimicrobial additives is designed to reduce the growth of harmful organisms such as bacteria, mold and fungi. SteriTouch® is particularly effective against illness causing bacteria such as MRSA, E. Coli and Salmonella.