

Micro⁺TM pro Smokerlyzer[®]

Helping People to Stop Smoking, One Breath at a TimeTM

Quick Start Guide v1



www.covita.net | 800.707.5751

© Copyright 2023 coVita LLC All Rights Reserved v042123

1 of 5



Helping People to Stop Smoking, One Breath at a Time™

Sections

- A. Welcome from the coVita Family
- B. Contents
- C. Monitor Layout
- D. Tips & Maintenance
- E. Infection Control
- F. How to Perform A Breath Test
- G. Key Features

A. Welcome from the coVita Family



Dear Valued coVita Client,

Thank you for being part of the coVita family where we are celebrating **30+ years of saving and improving lives with our Smokerlyzer® monitors.**

We wanted to remind you of the following:

- **coVita** includes U.S.A. based *complimentary life time telephone support and online training courses*
- Access to **coVita's** staff of *Certified Tobacco Treatment Specialists (CTTS)*
- **coVita** includes an *industry leading 5 year warranty* on the Micro+™ *pro, baby, basic* Smokerlyzer® family of monitors

Please review **coVita's new website & Education Destination** at www.covita.net/support/

Here you will find the following **complimentary** information:

- **Online Training Course**
 - *Quiz for Certification and Certificate of Completion*
- **Reference Guides**
 - *Quick Start, Calibration, Use & Infection Control Guides*
 - *CPT Codes for Reimbursement*
 - *Logs for Groups & Individuals*
 - *Interpretation Materials*
 - *Hand Outs & Explanations of the CO Readings*
 - *Instructional Videos*

The coVita family values and appreciates our relationship.
Together we can make a difference in peoples' lives everyday.

Sincerely,
- the coVita Family



B. Contents



1. Micro⁺™ pro **CO** Monitor
2. D-Piece™ One-Way Valve to filter out viral particles & bacterial spores **(replaced every 28 days)**
3. SteriBreath™ Mouthpiece **(single use)**
4. USB Cable
5. (3) AA Alkaline Batteries – **USE ONLY ALKALINE**
6. Monitor Microfiber Sleeve – can be used to protect and clean your monitor screen
7. Carrying bag for monitor & accessory storage
8. Quick Start Guide
9. Smokerlyzer® **CO** conversion charts: Maternity**CO** Chart - **CO**ppm to %F**CO**Hb & %**CO**Hb
10. Smokerlyzer® Poster
11. Infection Control Guide

Note: Full Manual & COdata+ patient database software can be downloaded at www.covita.net

C. Monitor Layout

1. LCD Display
2. Power Button
3. **SteriTouch™**- patented additive integrated into the monitor housing, engineered to kill 99.99% bacteria on contact
4. D-Piece™ Valve Opening
5. Exhaust Port - **DO NOT COVER**
6. USB Connector
7. Vent Hole – **DO NOT COVER WITH LABELS ETC.**
8. Battery Compartment
9. Battery compartment clip
10. Reset Button**
11. Programming Switch**



****DO NOT USE UNLESS INSTRUCTED BY COVITA ****

D. Tips & Maintenance

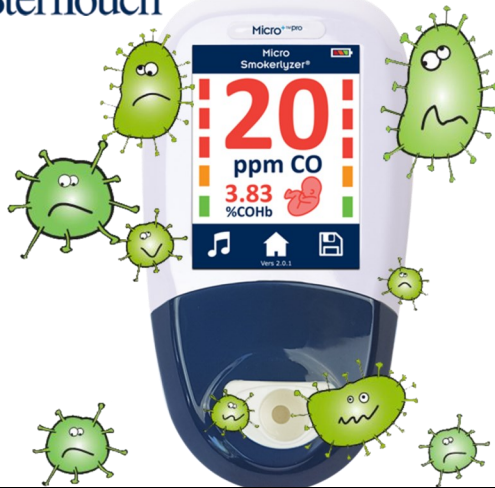


1. Change your **D-piece™** valve every **28 days**.
2. Calibrate every **6 months** to correct for sensor drift using **20 ppm coVita** calibration gas.
3. Don't oversaturate the screen with liquid when wiping down your monitor. This can leak into the PCB board and can cause damage.
4. Never store your monitor around cleansing products containing harsh chemicals, other cleaning agents or solvents.
5. Never block the air/vent hole on the back of the monitor with labels.



E. Industry Leading Infection Control Technologies

SteriTouch®



The surface of your monitor has an added material known as SteriTouch®, an antimicrobial product, offers protection against a range of bacteria including E.coli, MRSA, Salmonella and Legionella, as well as black mold growth, biofilm and fungi¹.

Statement from SteriTouch® manufacturer states "Coronavirus COVID-19 is an enveloped virus, so called because of its fatty outer membrane or 'envelope'. Several of the active substances we use have been successfully tested against other enveloped viruses, such as Influenza, Avian flu and SARS. It would be reasonable to imply that those same active substances would be effective against COVID-19, but at this stage testing against COVID-19 is not available."

D-piece™ Valves



The D-piece™ contains a one-way valve and an integrated infection control filter with the ability to filter out viral particles and bacterial spores.

The D-piece™ filters have been independently tested for prevention of cross infection. We are happy to announce based on this data Bedfont concluded that bacterial and viral pathogens including (COVID-19 / SARS-COV-2) will effectively be removed by the D-piece™ filter at an efficiency rate of >99% (bacteria) and >97% (viruses).

- Replace Monthly.

SteriBreath™ Eco Mouthpieces



The SteriBreath™ mouthpieces are for single-use ONLY.

SteriBreath™ Eco mouthpieces are entirely made from paper and are 100% recyclable and 100% biodegradable.

The mouthpieces are individually wrapped for convenience, ease of handling and greater infection control.

Wipes & Hand Sanitizers



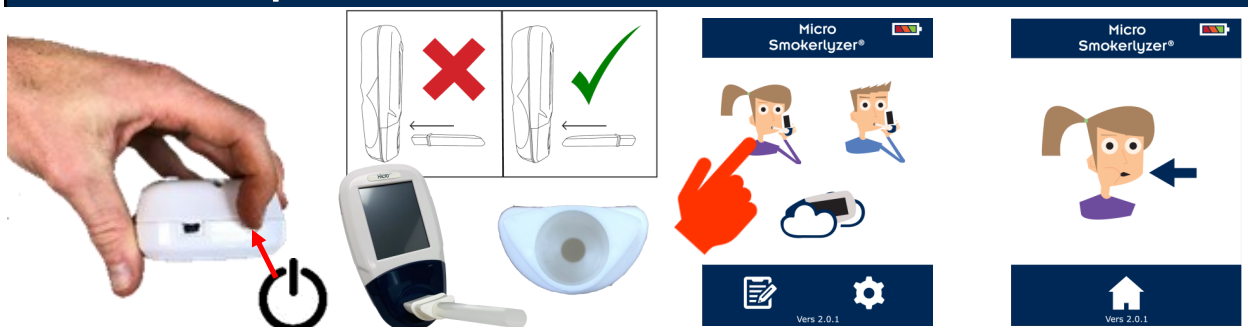
NEVER STORE your monitor around cleansing products containing harsh chemicals or other cleaning agents or solvents.

coVita offers alcohol-free cleansing wipes which are specifically engineered for use on our monitors and accessories. Effective against 99.999% of Germs, Spores, Bacteria, and Fungi. Tested against H5N1 Avian Flu and H1N1 Swine Flu. Additionally, been tested by the supplier and found effective against (COVID-19 / SARS-COV-2), as the product shows efficacy against feline coronavirus, a surrogate coronavirus (for COVID-19 / SARS-COV-2).

Additionally, coVita offers a hand sanitizer which was designed to safely and gently cleanse your hands. Because it's engineered to be alcohol-free, it's gentle on your hands and it won't interfere with your monitor's sensor or accessories. Kills 99.99% of germs, bacteria, & fungi without drying your skin.



F. How to Perform a Breath Test



1. Turn on the monitor by pressing & releasing the button on top of the monitor.

2. Insert a D-piece™ & SteriBreath™ mouth-piece into the monitor. **Note:** Round opening of D-piece™ faces you.

3. Press Female or Male **Breath Test** icon when ready to begin a test.

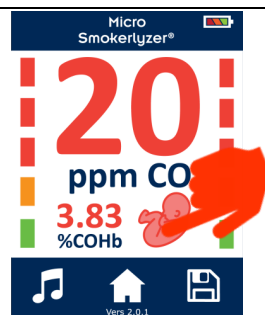
4. Instruct patient to take a deep breath and hold.



5. Patient should hold their breath during the 15 second countdown period.



6. At the end of the countdown when you hear the third beep instruct the patient to place mouth on the mouth-piece and exhale all of the air out of their lungs.

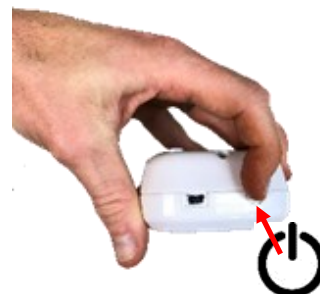
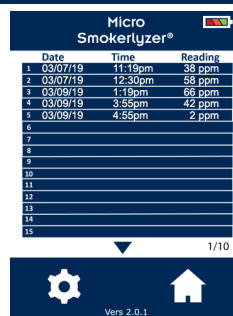
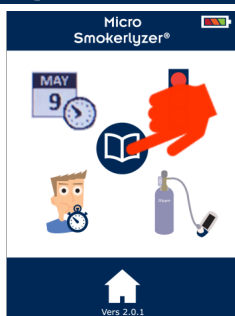
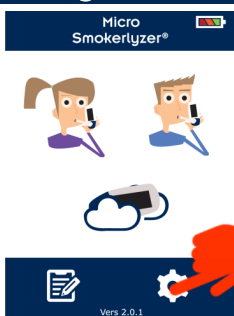


7. The monitor has finished interpreting the sample when the **three icons** appear at the bottom of the screen. The readings will be displayed in **PPM, %COHb**.

Note: If testing a pregnant woman **press** the **fetus icon** to see the fetal conversation. To return the previous screen **press** the **fetus**. **Press** the **home icon** to return to the **main home screen**.



G. Key Features & Tips



LOG. The monitor auto logs the **last 150 readings** with a **time** and **date stamp**. The log can be accessed by **pressing** the **gear icon** on the home screen and then **pressing** the **log icon**. **Press** the **arrow** to scroll through the pages of readings. **Press** the **home icon** to return home.

On/Off. To turn off your monitor **press and hold** the power button for 3 seconds. Monitor will also power off **after 2 minutes** of inactivity to save power.