



Firmware ≤ V2.31

### A. Calibration Tips



Figure A

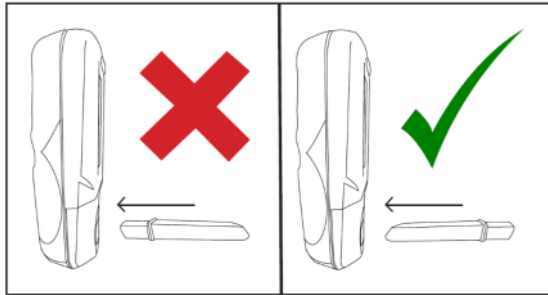


Figure B

1. coVita calibration instructional videos can be found under the support section of [www.covita.net](http://www.covita.net).
2. You must calibrate every **6 months** to correct for sensor drift using **20 ppm Carbon Monoxide (CO)** calibration gas. On occasion your Micro<sup>+</sup>™ may prompt you for an intermittent calibration.
3. Your Micro<sup>+</sup>™ has built in calibration reminders to prompt you to calibrate every **6 months**.
4. Be sure to identify your **flow meter-regulator** for correct instructions.
5. Remove **flow meter-regulator** from can for proper storage and replace dust cap. (You may hear a pop and this is normal.)
6. Ensure that the cali-adaptor tubing has **no kinks** while the gas is flowing.
7. Be sure you are using the compatible cali-adaptor tubing and D-piece to avoid issues with calibrating.
8. Be sure you are inserting the D-piece into the monitor correctly. The circle opening must be facing you. **(Figure A & B)**
9. **Never** block the air/vent hole on the Micro<sup>+</sup>™ with labels etc.

### B. Required Parts



© Copyright coVita LLC All Rights Reserved

- A. **20 ppm Carbon Monoxide (CO)** Calibration Can
- B. Fixed Flow 1 lpm meter-regulator
- C. Cali-adaptor Tubing
- D. D-Piece
- E. Micro<sup>+</sup>™ Smokerlyzer®

### C. Calibration Kit Set Up



1. Remove white or black dust cap from can of gas
2. Ensure the control valve on the flow meter-regulator is in the off position.
3. Screw the regulator-flow meter onto the gas can (some slight pressure may be required). This can be done by screwing the gas can into the valve.
4. Attach the small end of the tubing onto the regulator-flow meter.
5. Insert the larger end of the cali-adaptor tubing into the D-piece. Ensure a tight fit.
6. Verify the gauge on the regulator-flow meter is registering gas (arrow is not on zero)




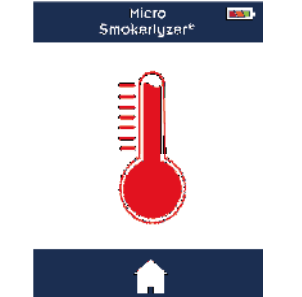
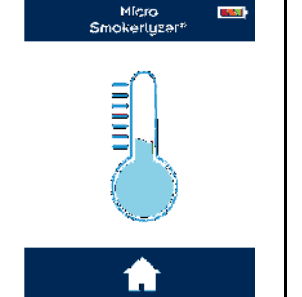

Firmware ≤ V2.31

### D. Calibration

**IMPORTANT:** Do not connect the cali-adaptor or D-piece to the monitor until after the monitor zeros (Step 5)

 <p><b>1.</b> Press Gear Icon</p>	 <p><b>2.</b> Press Calibration Icon to begin auto-zero process</p>	 <p><b>3.</b> Monitor will display hour glass while zeroing</p>	 <p><b>4.</b> Assemble calibration kit (already done) then press the arrow</p>
 <p><b>5.</b> Insert D-piece with the cali-adaptor attached into monitor, then press the arrow</p>	 <p><b>6.</b> Turn the gas on, then press the arrow</p>	 <p><b>7.</b> Hour glass will display as the monitor is calibrating</p>	 <p><b>8.</b> Calibration is successful when a check mark is received. <b>**IMPORTANT** Must press the check mark to lock in the calibration.</b></p>

### E. Additional Screens & Tips

 <p>Failed Calibration Screen You must perform a reset on the monitor. <b>Please see section F.</b></p>	 <p>Monitor temperature is too hot. You must turn off the monitor for a minimum of 5 minutes before calibrating</p>	 <p>Monitor temperature is too cold. You must move your monitor to a room temperature environment before calibrating</p>	 <p>Calibration reminder to prompt you to calibrate every 6 months. Press the arrow to start calibrating.</p>
--	--	--	--







Firmware ≤ V2.31

**F. Reset & Calibration**

**IMPORTANT:** Do not connect the cali-adaptor or D-piece to the monitor until after the monitor zeros (Step 5)

 <p>1. Turn on your monitor. Be sure the D-piece is removed from monitor until step 5.</p>	 <p>2. Using an opened paper clip, press/hold the reset button located in the battery compartment in for <b>30 seconds</b> until the monitor beeps &amp; turns off and then release.</p>	 <p>3. Turn on your monitor and the hour glass will appear while automatically zeroing</p>	 <p>4. Assemble calibration kit (already done) then press the arrow</p>
 <p>5. Insert D-piece with the cali-adaptor attached into monitor, then press the arrow</p>	 <p>6. Turn the gas on, then press the arrow</p>	 <p>7. An hour glass &amp; numbers will display as the monitor is calibrating.</p>	 <p>8. Calibration is successful when a check mark is received. <b>**IMPORTANT** Must press the check mark to lock in the calibration.</b></p>

**G. Additional Screens & Tips**

			
<p>Failed Calibration Screen Allow 5 minutes with D-piece removed from monitor and then try calibrating again.</p>	<p>Monitor temperature is too hot. You must turn off the monitor for a minimum of 5 minutes before calibrating</p>	<p>Monitor temperature is too cold. You must move your monitor to a room temperature environment before calibrating</p>	<p>Calibration reminder to prompt you to calibrate every <b>6 months</b>. Press the arrow to start calibrating.</p>